

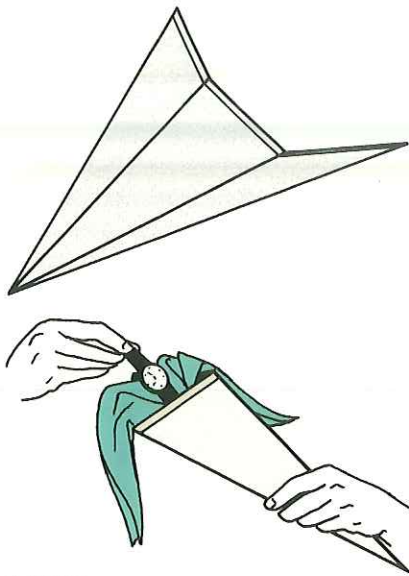
ACCESSORIES



1731

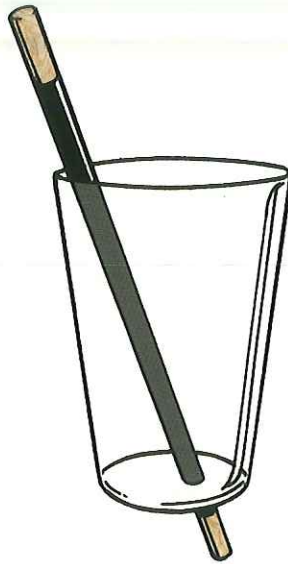
WORLD'S BEST CHANGING BAGS

This classic utility device eliminates the need for sleight of hand to vanish, produce or change silks or other small objects. Made with a hardwood handle, brass ring and a velvet bag, this beautifully made apparatus exceeds in quality any other changing bag.



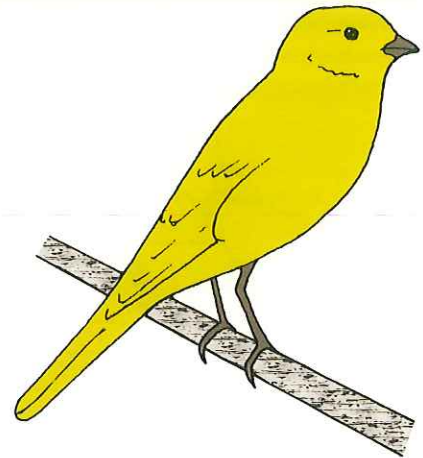
**1728
TARBELL
UTILITY CONES**

These are specially made for us out of very heavy paper. Each cone has one secret pocket, reinforced at the seams with cloth. Our demonstrator at the studio has been used hundreds of times and as yet shows no signs of wear. The cone will produce, exchange, or vanish such items as handkerchiefs, ribbons, cards, watches, etc.



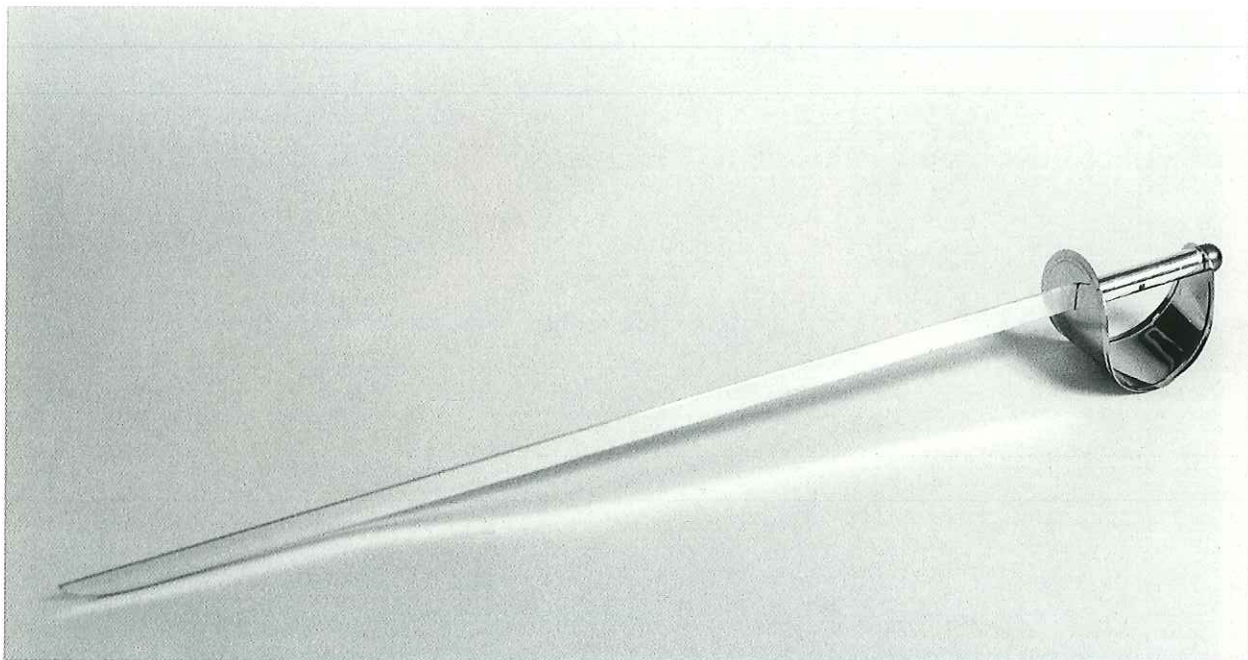
**1726
BOTTOMLESS GLASS**

An old familiar item, well made, and useful for many effects. If you need one, we can supply a good glass tumbler.



**1701
RUBBER CANARY**

Like to do livestock effects? Here is the answer, the true-to-life Owen Rubber Canary, carefully made, and with fine finish detail. These can be used any place where a live bird is needed.



**1718
OWEN SPECIAL SWORDS**

These swords are made of special dural alloy with metal guards and hilts to simulate the real article. The lustrous gleaming blades look so real they immediately put you "En Garde." Used for sword box, basket, temple illusions or anyplace where a sword would be desired yet lightness of weight is a factor.



**1722
GIANT THIMBLES**

Oversize for greater visibility these thimbles are as easy to manipulate as standard sizes. Finished red or white, special orders on request.

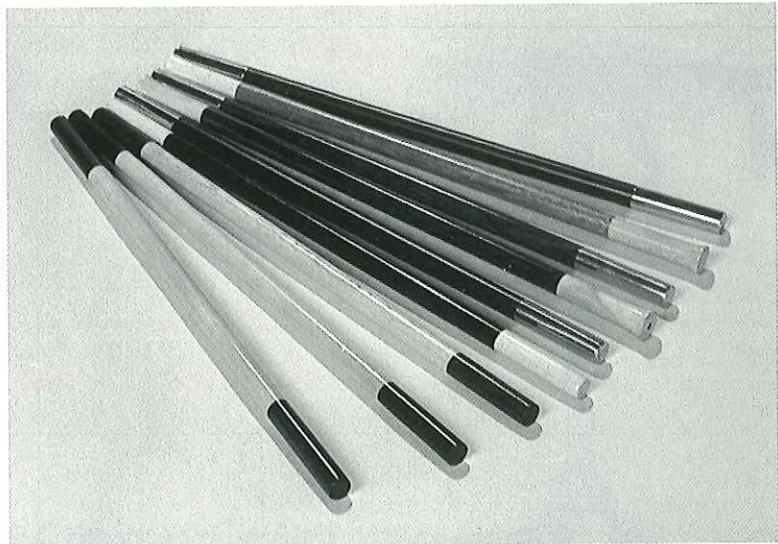
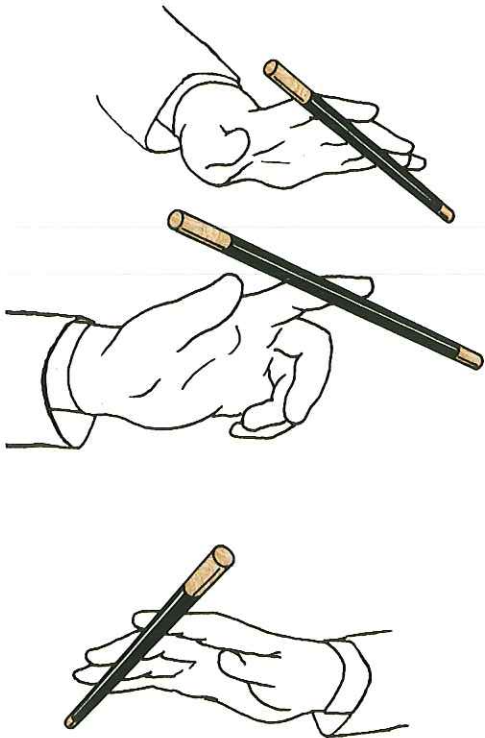
**1723
THIMBLES**

Handturned from seasoned hardwoods and finished in bright lacquers. Medium and large sizes.



**1702
RUBBER DOVE**

Owen collapsible doves are of top quality latex finished in white dove color with genuine taxidermy eyes. The amazing detail of these birds enables you to perform many miracles even close up.

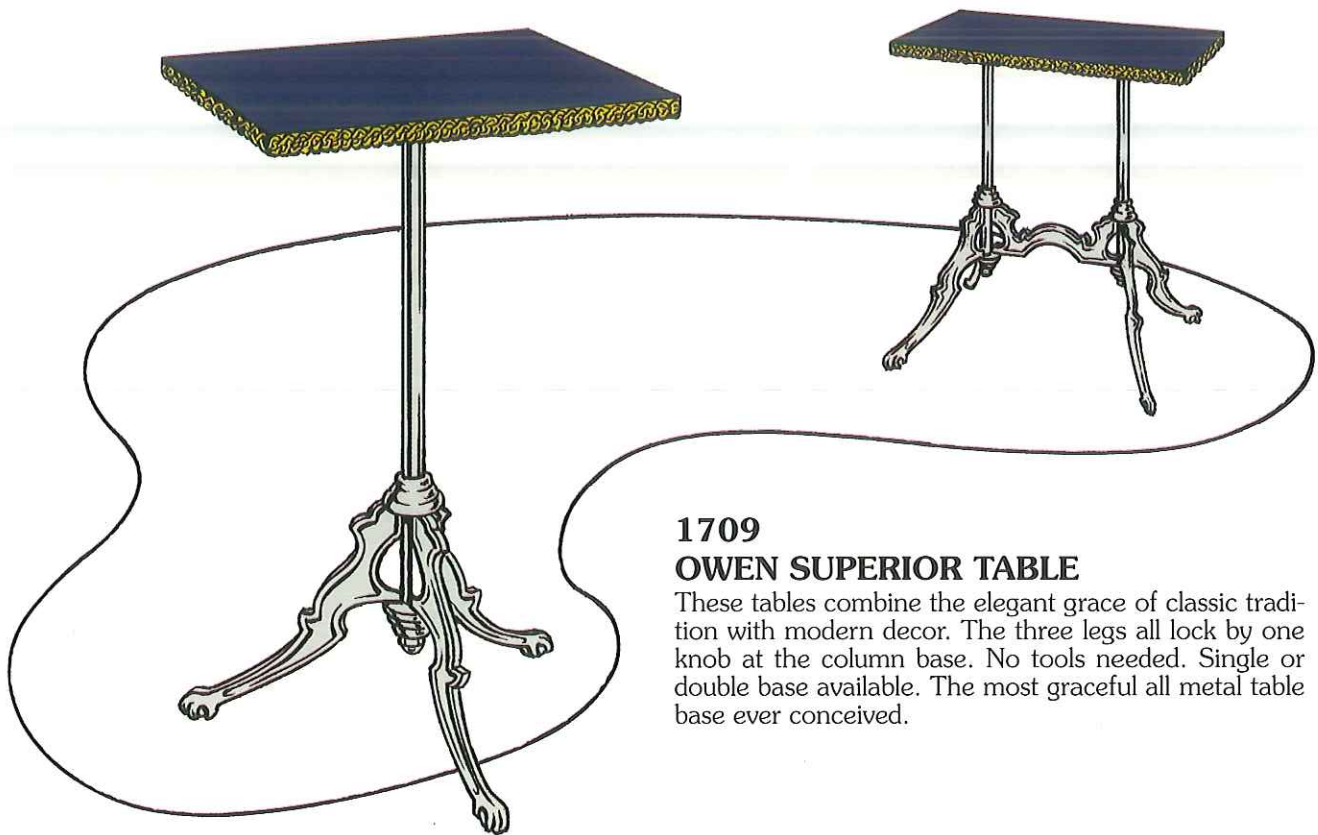


**1716
FLOATING WAND DEVICE**

After passing his wand for examination, the magician causes it to cling to his fingers in every position conceivable. Floating device only.

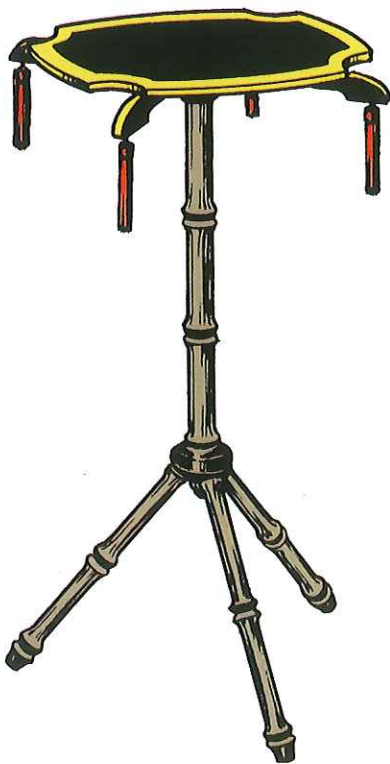
**1717
MAGICIAN'S WANDS**

Fine wands of rare and exotic woods in tasteful combinations with chrome, brass, copper, ivory, gold or wood tips. Exquisitely turned and finished for the most elegant touch imaginable to any magician's performance. For gifts or presentation these wands cannot be excelled. Special cases designed upon request.



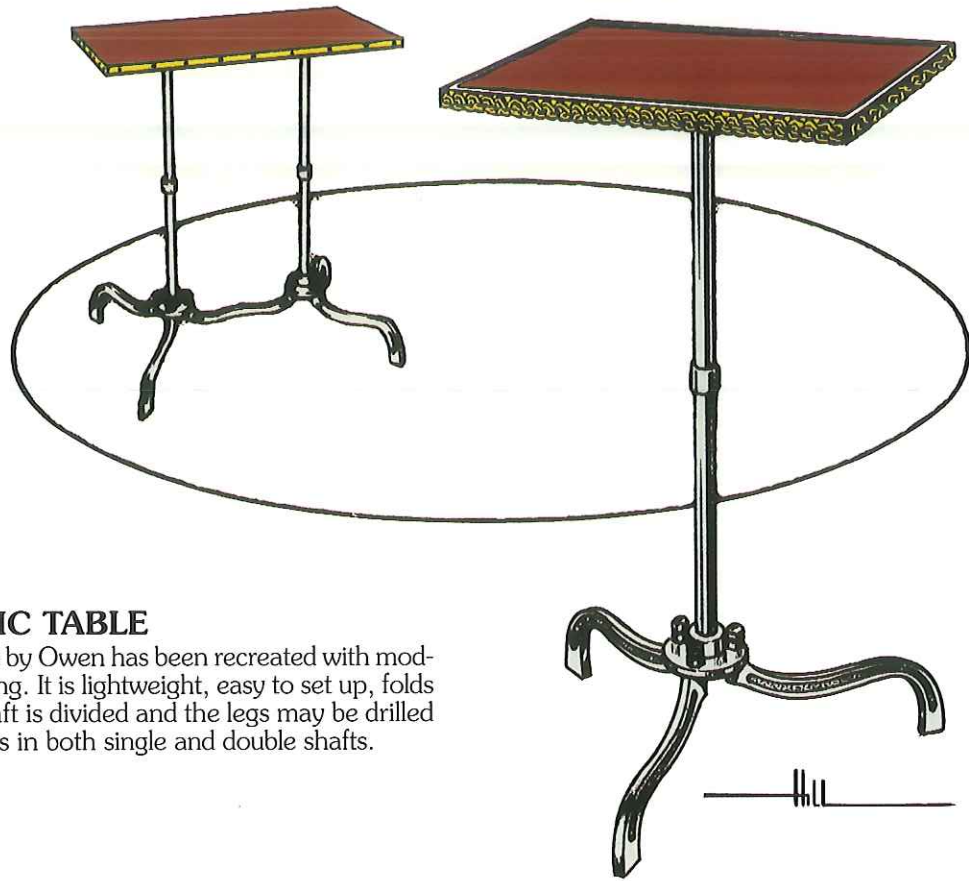
**1709
OWEN SUPERIOR TABLE**

These tables combine the elegant grace of classic tradition with modern decor. The three legs all lock by one knob at the column base. No tools needed. Single or double base available. The most graceful all metal table base ever conceived.



**1707
BAMBOO CHINKO TABLES**

The closest approach to oriental decor of anything in this line. The legs of fine turned hardwoods have the appearance of real bamboo and the strikingly shaped tops add to the effectiveness of the ensemble. A handsome and pleasing combination. Side table 12 x 14 inches. Center table 16 x 24 inches.



1706

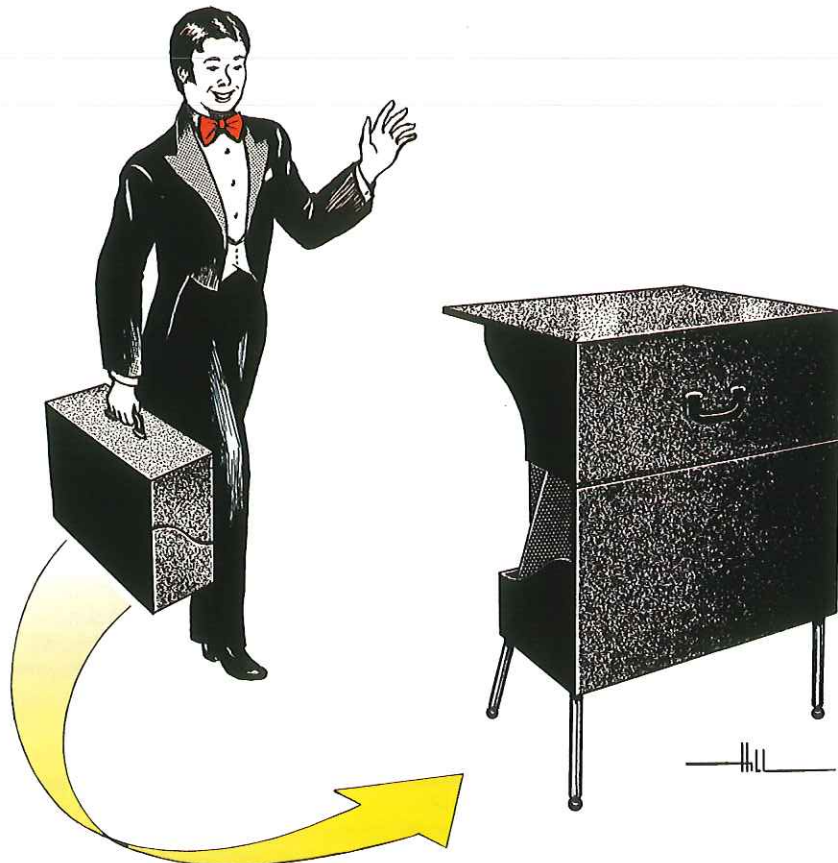
THE OWEN CLASSIC TABLE

This time tested design table by Owen has been recreated with modern materials and engineering. It is lightweight, easy to set up, folds for packing. The center shaft is divided and the legs may be drilled for casters. This table comes in both single and double shafts.

1714

SU TABLE

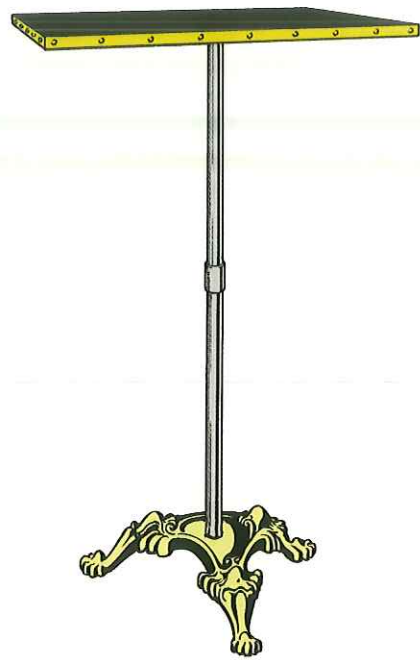
This Su Table is an excellent example of Owen refinement of magical equipment. Owen acquired the entire Taylor line by purchase and from the original Su Table have developed this ingenious and practical table for the storage, transportation and performance of magic. The 16 x 24 inch table stands 36 inches high on four highly polished metal legs with casters. Folded, the case measures 10 x 16 x 24 inches, is finished in leatherette and weighs less than 15 pounds. In this latest model we have added inside storage area without increasing the overall size.





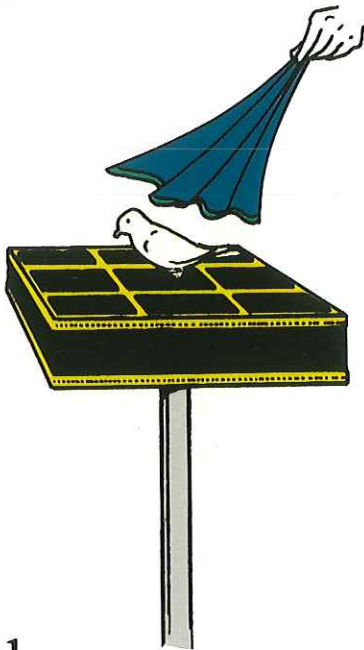
**1705
COLONIO TABLES**

For an elegant magical setting we call your attention to this time tested design by Thayer. The legs are removable by hand, being held by special screw bolts. Very portable, lightweight and manufactured of select hardwoods. Owen offers this table in single and double pedestal. A set of two single side tables and a double center form a magnificent setting.



**1734
KELLAR TABLE BASE**

Another addition to the fine line of Owen Magic magicians' table bases. This base is recommended when a small sized table top is used. It is proportionately designed to be used for tables holding one or two props placed over the center shaft of the table. A strong and sturdy base for this use, it breaks down for easy packing.

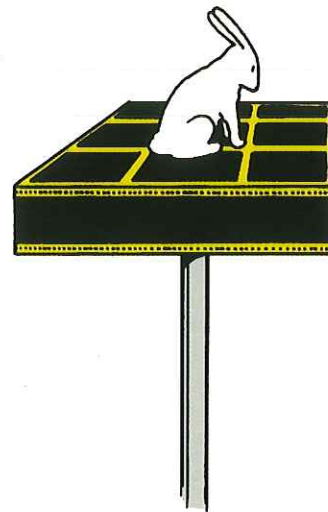


**1711
BLACK ART TABLE TOPS**

These tops are of 3/8 inch plywood covered with gold trimmed black felt. The wells are interchangeable with solid inserts. Drapes ornamented with gold ribbon.

Top sizes:
14 x 20 inches 2 wells 3x3x5 inches
16 x 24 inches 3 wells 4x4x5 inches

We custom build other tops at your request.



**1711A
MASTER CHANGING TABLE**

A mechanical and automatic top for exchanging doves, small rabbits, candy boxes or other articles. The exchange is made by placing the article on the top and wrapping it in paper. The size of the top is 16 x 16 inches and is designed to fit any Owen table base.

**1711B
TABLE TOPS**

Fine plywood, felt covered in the following sizes (inches): 12x12; 16x16; 14x20; 16x24; special sizes to order.

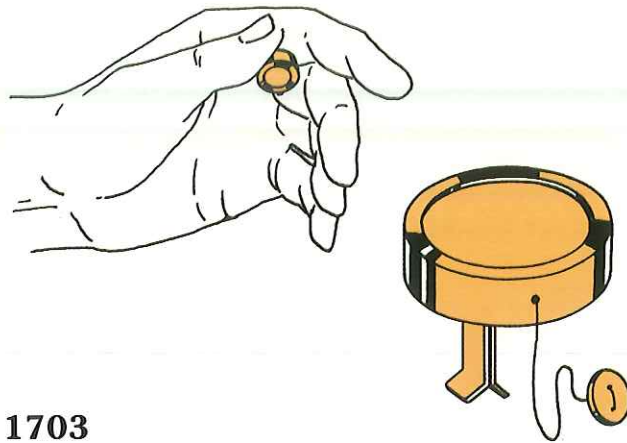


**1740
OWEN FOLDING RABBIT TABLE**

This cute table folds flat and may be viewed from any angle and still show the Rabbit caricature in its entirety. A center well may be added upon request.

**1708
ELEPHANT TABLES**

The oriental charm and splendor of design of these tables have never been equaled. The tables fold flat and set up in an instant. Made of top grade plywood finished with seven applications of brilliant lacquer. The tops are felt covered with tasteful edge trimming. Available in side or center.

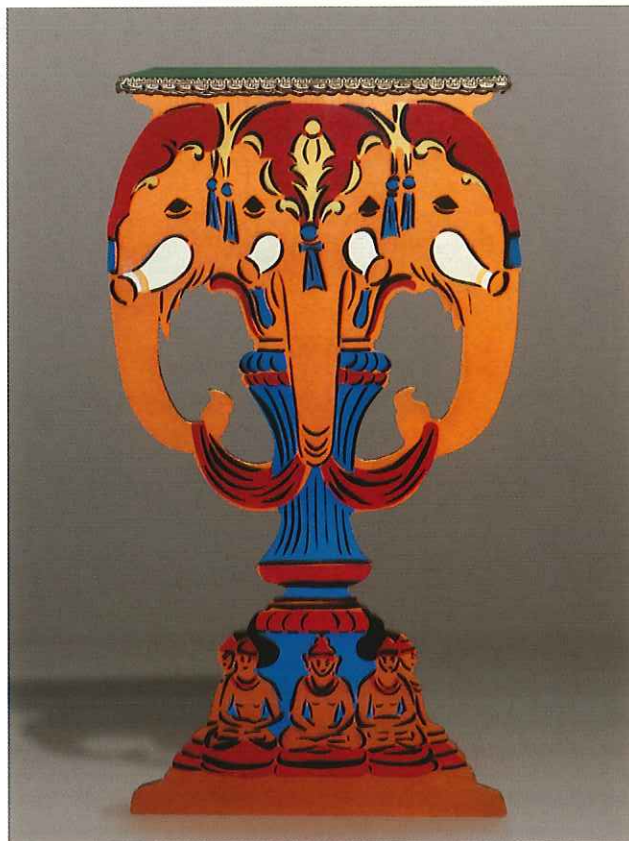


**1703
REELS**

This Owen Reel has a longer and stronger pull than any hand reel previously offered. It has a 48 inch pull and is of all brass construction. A truly top quality item finished in flesh color. Owen has in stock a limited supply.

**1725
ROPE GIMMICKS**

The device commonly known as the Tarbell gimmick which screws into the rope ends without tools, sewing or pins. Made in solid brass and sold in pairs to be used repeatedly for many years. Owen also sells the Conradi type gimmicks which push into the rope ends.



1710

LIVESTOCK BAGS

For producing live animals in a sure manner without harm to the animal, these bags are the best method. Two sizes are available. Livestock always enhance magical entertainment for both adults and children. These Owen livestock bags are sure applause getters.

1727

FLASH PULL

A device for the instant vanish of a handkerchief from a glass or tube. Made with a strong arm strap and a cord pull of little friction, the device will instantly vanish a silk from the finger tips. It is adjustable for different arm lengths. A tension release gimmick is furnished with each pull, this is not a spring wound device. Also a great pull for the Challenge Cage Mystery (No. 2002).



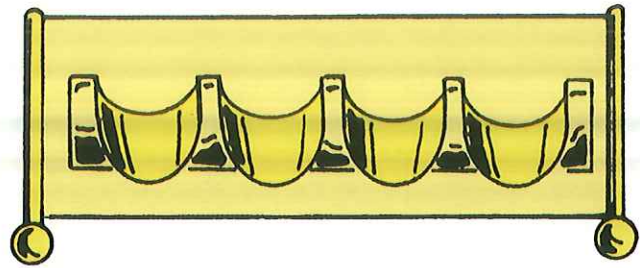
1738

FOG MACHINE

Enhance your magic act with a dramatic layer of fog rolling at your feet and covering the stage. Give your act the mood setting appearance of mystery. Owen can supply you with either dry ice or fog juice machines. We also can supply snow effects.

48

ACCESSORIES



1721

SPECIAL HOLDERS

Owing to the demand for our popular deluxe wooden thimbles we can now supply special holders with clips for four thimbles, state size desired.

1713

ROPE

Magician's rope for use in many rope tricks; genuine, superior grade.

1712

SERVANTES

Type A: The Handy Servante. A most useful and desirable article is this neat shelf servante that can be attached quickly to any of our various table tops. It is sufficiently deep to hold a tumbler. May be folded flat when not in use.

Type B: Portable Bag Servante. This servante may be used on any table. It is so constructed that it will swing underneath the table when not in use. It is especially designed for secretly disposing of small articles up to the size of a tumbler.

1739

WOODEN EGGS

Realistic looking wooden eggs of just the right weight for use in such tricks as the Egg Bag, Eggs From Hat, etc. Made heavier than hollow plastic eggs to give better control in handling.

1735

ORIENTAL GONGS

Owen Magic has in stock an assortment of brass oriental gongs in varying sizes. State your needs and we will be glad to assist you.